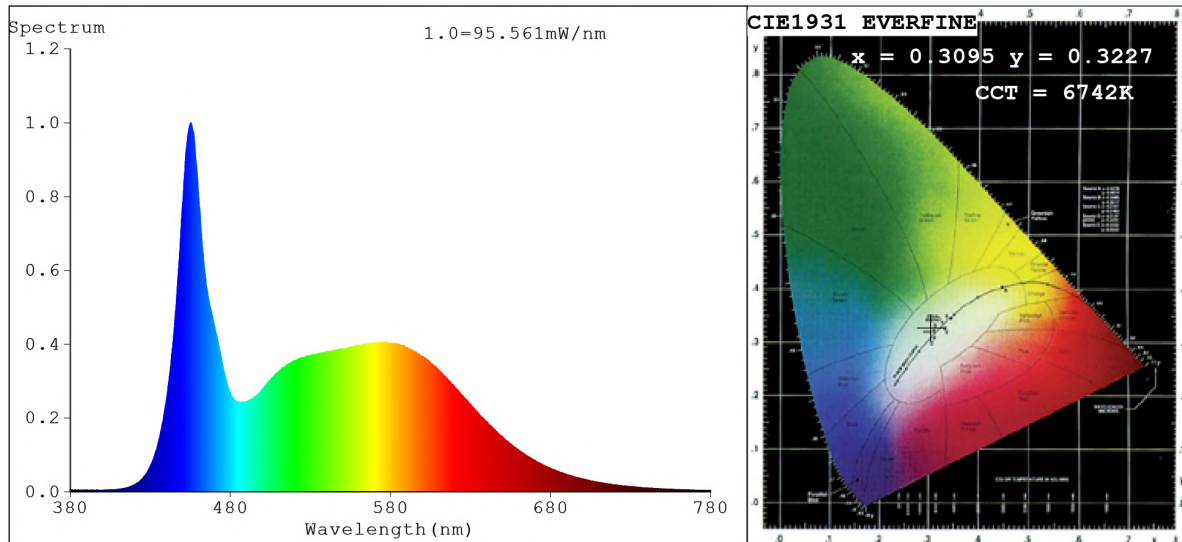


Spectrum Test Report



Color Parameters:

Chromaticity Coordinate: $x=0.3095$ $y=0.3227$ $u'=0.1980$ $v'=0.4644$

$CCT=6742K$ ($Duv=0.0016$) Dominant WL: $L_d = 485.8nm$ Purity=8.9%

Ratio: $R=13.5\%$ $G=80.0\%$ $B=6.5\%$; Peak WL: $L_p=455.3nm$ FWHM=21.7nm

Render Index: $R_a=84.4$ $CRI=77.8$ $TM30:R_f=80$ $R_g=92$

$R_1 = 84$ $R_2 = 93$ $R_3 = 94$ $R_4 = 80$ $R_5 = 83$ $R_6 = 86$ $R_7 = 86$

$R_8 = 69$ $R_9 = 11$ $R_{10} = 81$ $R_{11} = 80$ $R_{12} = 57$ $R_{13} = 88$ $R_{14} = 97$ $R_{15} = 79$

Photo Parameters:

Flux = 2502 lm Eff. : 129.89 lm/W $F_e = 8.188 W$ Scotopic: 5875.3 S/P: 2.3481

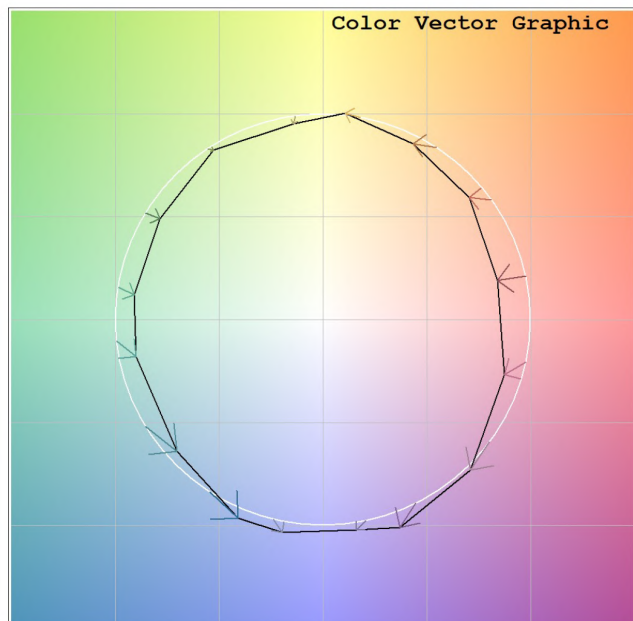
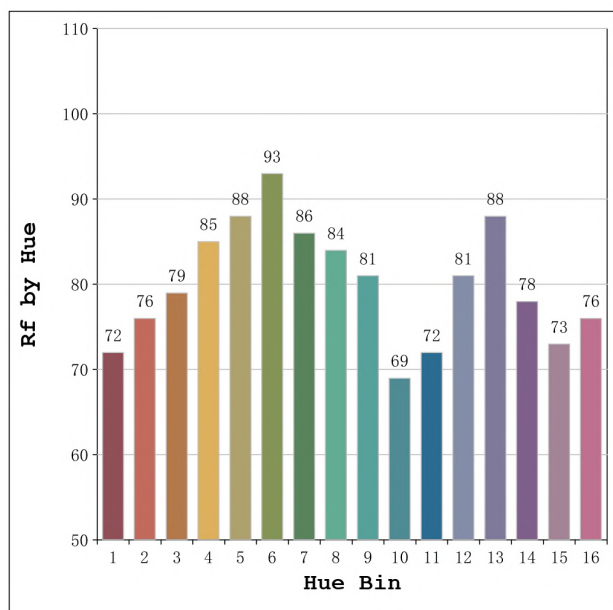
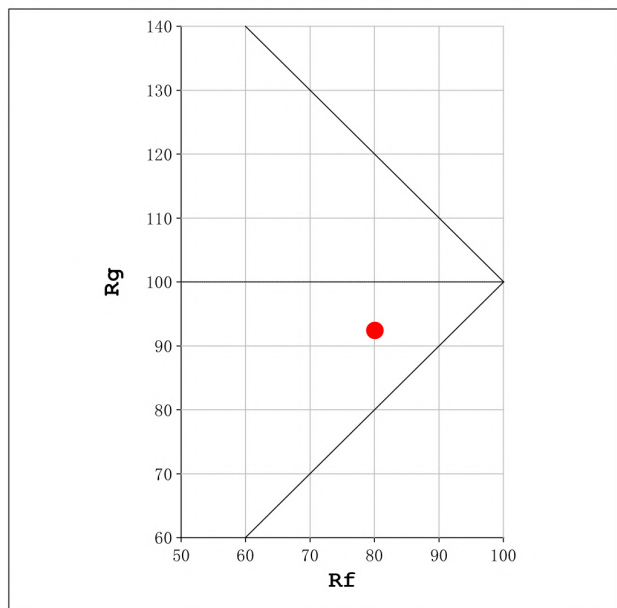
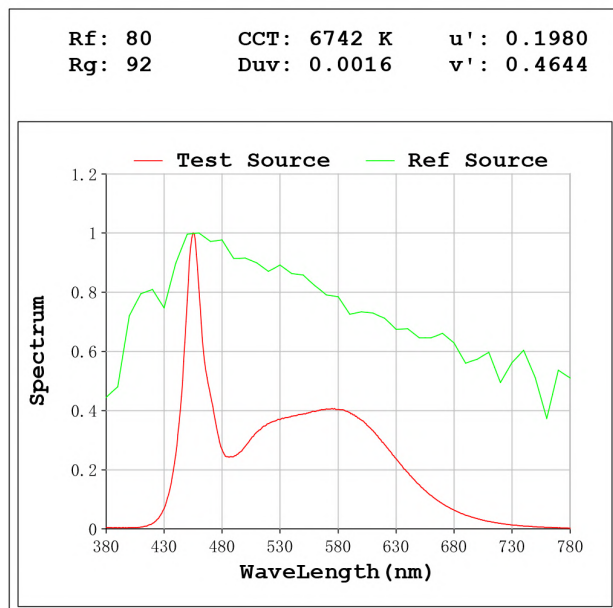
Electrical parameters:

$V = 23.998 V$ $I = 0.8027 A$ $P = 19.26 W$ $PF = 1.000$

Status: Integral $T = 250 ms$ $I_p = 33462 (51\%)$

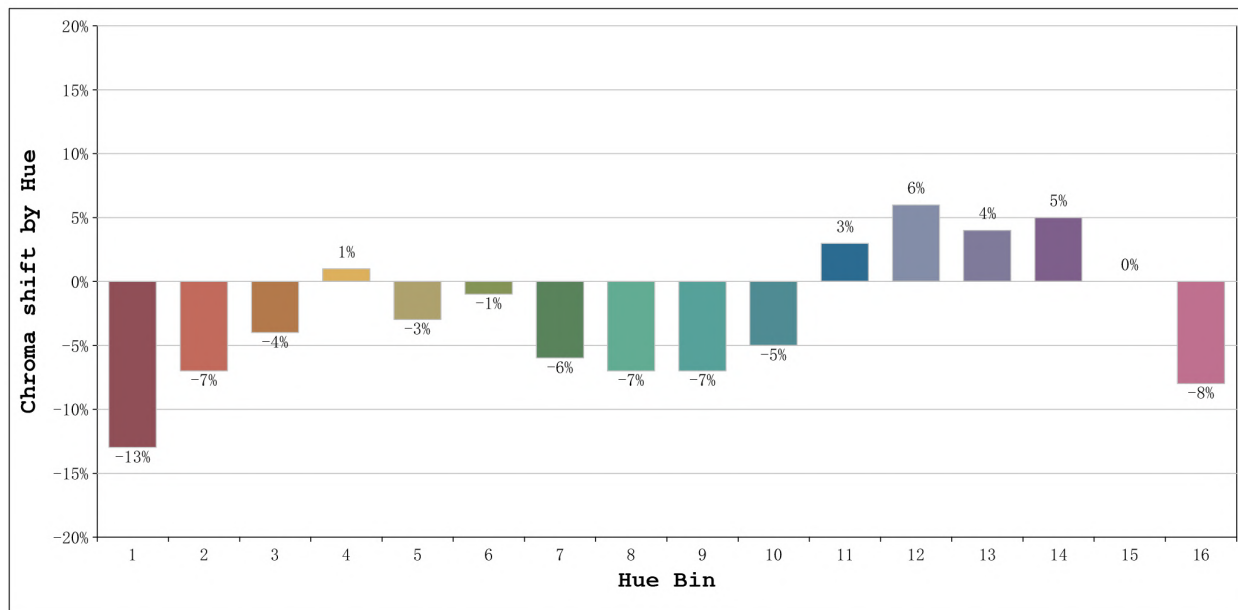
Model: Ecoled Élite 20 6500K
 Tester: Sergio Carneros
 Temperature: 25Deg
 Manufacturer: Luz Negra

Number: 31.017
 Date: 2023-04-04 08:11:34
 Humidity: 57%
 Remarks: 100cm de tira flexible



Model:Ecoled Élite 20 6500K
 Tester:Sergio Carneros
 Temperature:25Deg
 Manufacturer:Luz Negra

Number: 31.017
 Date:2023-04-04 08:11:34
 Humidity:57%
 Remarks:100cm de tira flexible



			Graphic shift(%)	
Hue Bin	Hue Angle	Rf	Chroma	Hue
1	0.0° - 22.5°	72	-13	1
2	22.5° - 45.0°	76	-7	7
3	45.0° - 67.5°	79	-4	10
4	67.5° - 90.0°	85	1	8
5	90.0° - 112.5°	88	-3	2
6	112.5° - 135.0°	93	-1	-1
7	135.0° - 157.5°	86	-6	-1
8	157.5° - 180.0°	84	-7	2
9	180.0° - 202.5°	81	-7	9
10	202.5° - 225.0°	69	-5	19
11	225.0° - 247.5°	72	3	18
12	247.5° - 270.0°	81	6	6
13	270.0° - 292.5°	88	4	-4
14	292.5° - 315.0°	78	5	-12
15	315.0° - 337.5°	73	0	-15
16	337.5° - 360.0°	76	-8	-7

Model:Ecoled Élite 20 6500K
 Tester:Sergio Carneros
 Temperature:25Deg
 Manufacturer:Luz Negra

Number: 31.017
 Date:2023-04-04 08:11:34
 Humidity:57%
 Remarks:100cm de tira flexible